

# New Features of Refractor 3.5

---

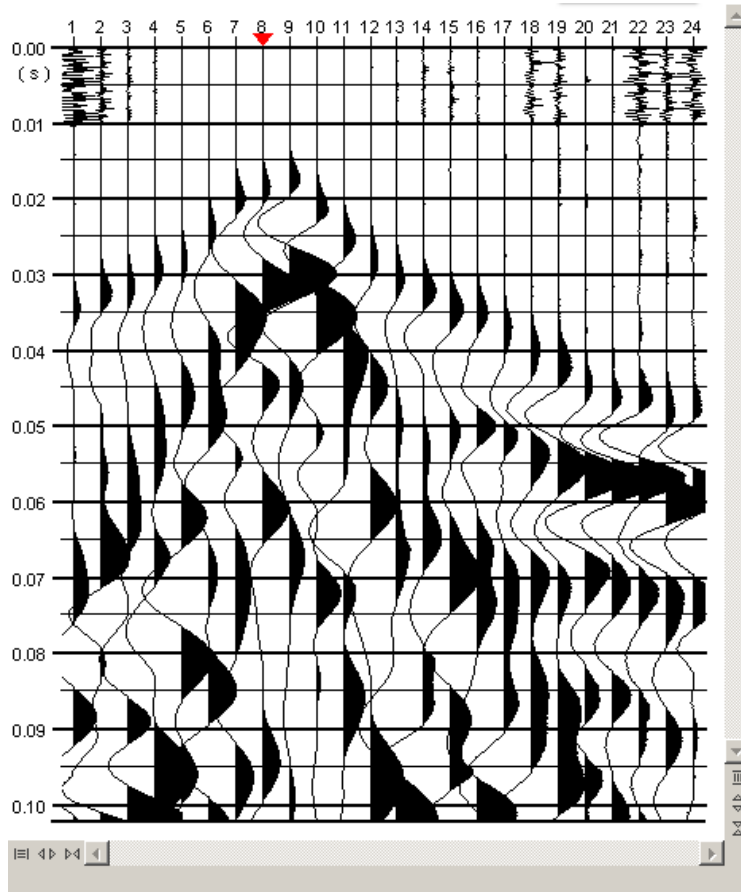
©2008 Geogiga Technology Corp.

# New Features

---



- Select trace with [→] /[←] while holding [Shift]
- Scale single trace
- Reverse polarity
- Redo / Undo trace editing
- Synchronize color of first break picks between trace window and TX curve window
- Add intercept time method
- Generate geological section

# Scale Single Trace

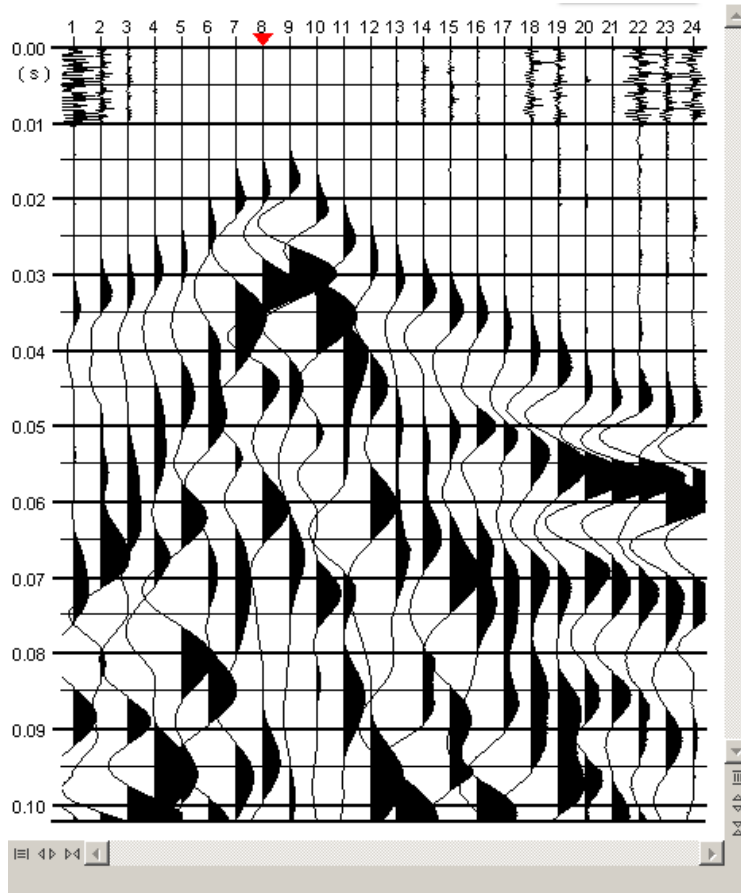


➤ Select trace with left mouse button on data while holding [Ctrl] or with [→] / [←] while holding [Shift]

➤ Scale single trace

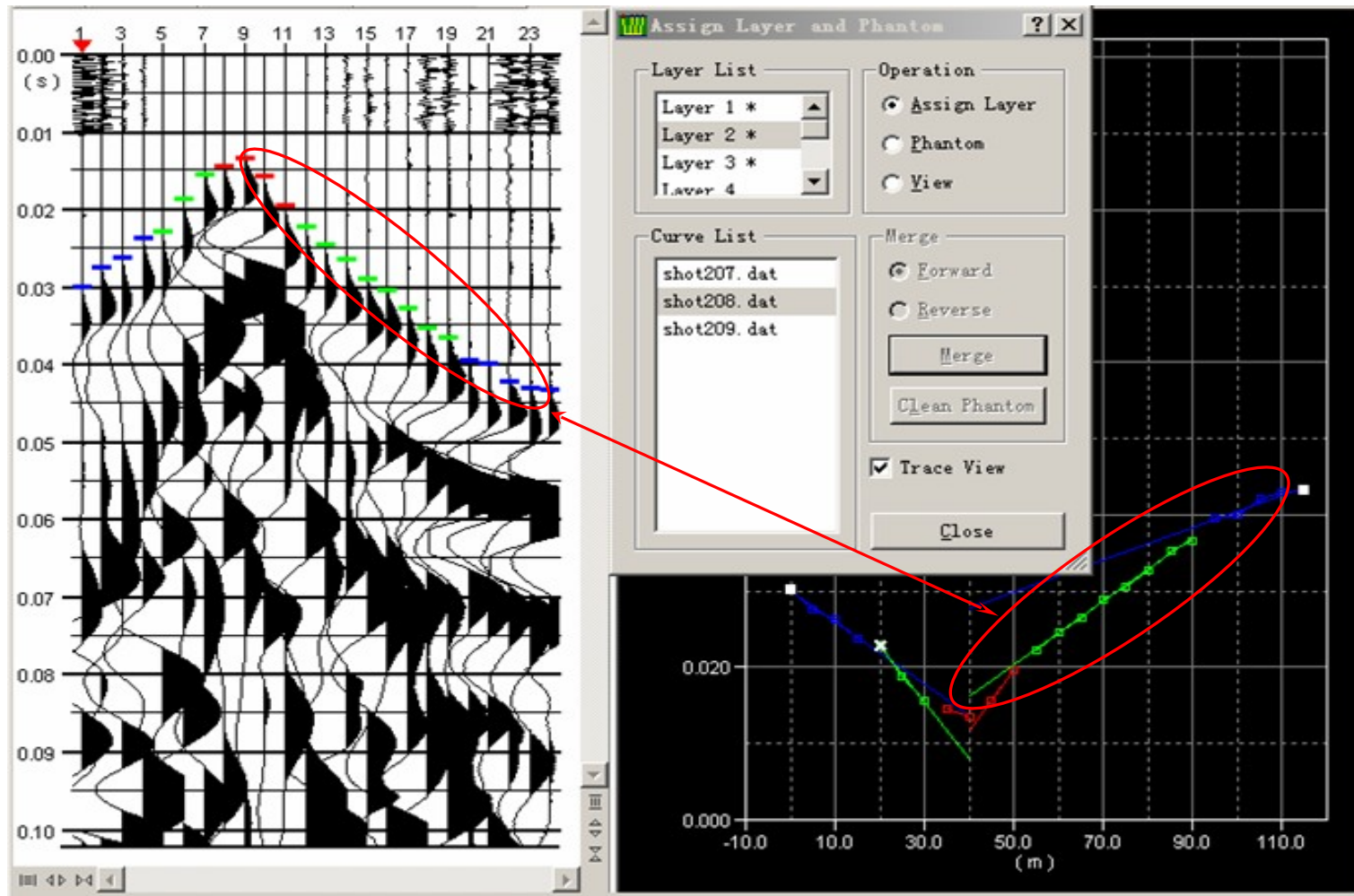
- Use shortcut key [→] or  to scale up
- Use shortcut key [←] or  to scale down

# Reverse Polarity



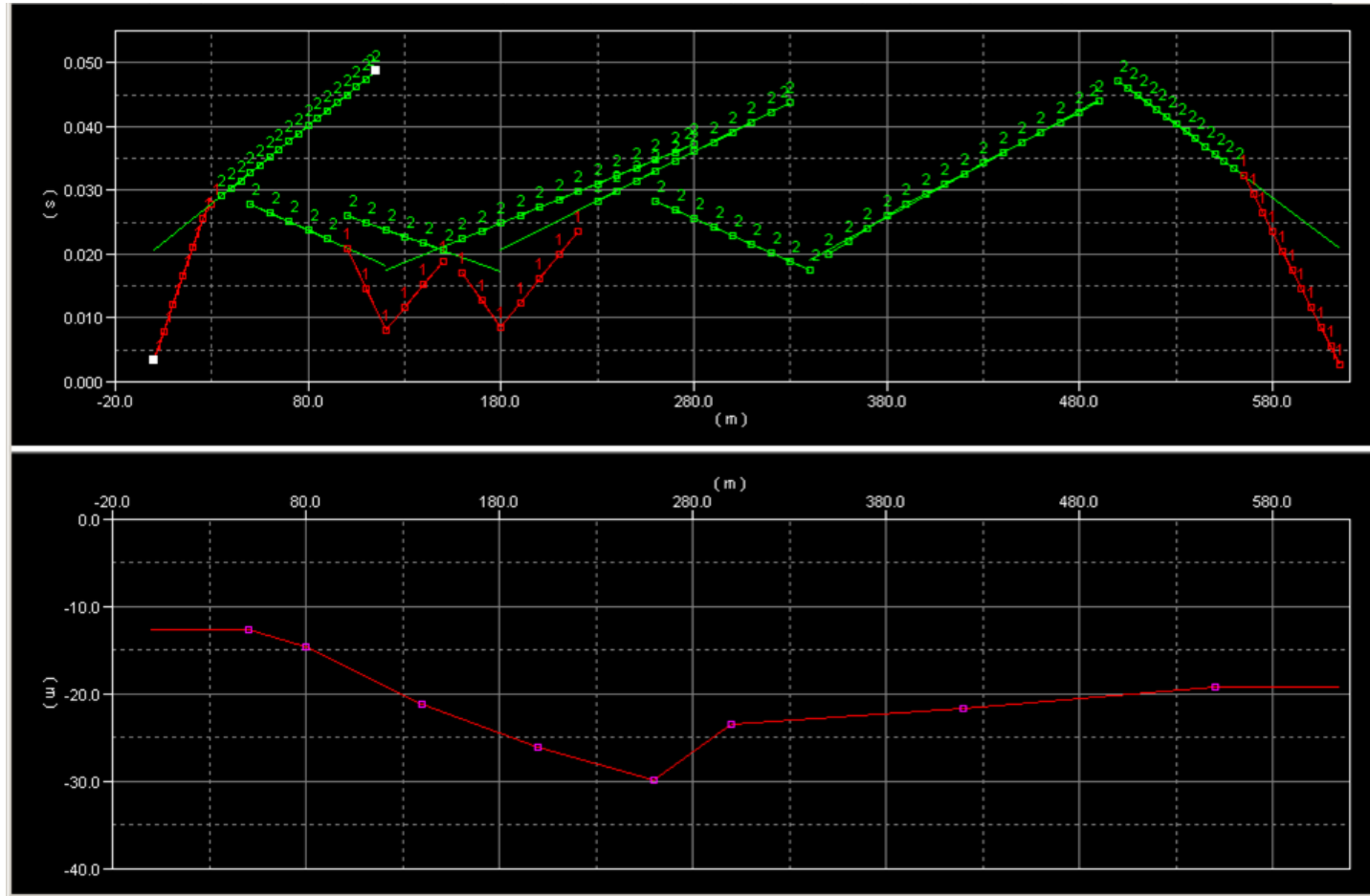
- Select trace with left mouse button on data while holding [Ctrl] or with [→] / [←] while holding [Shift]
- Use shortcut key [P] or [Trace]->[Reverse Polarity] to reverse polarity of current trace

# Synchronize Color of First Break Picks



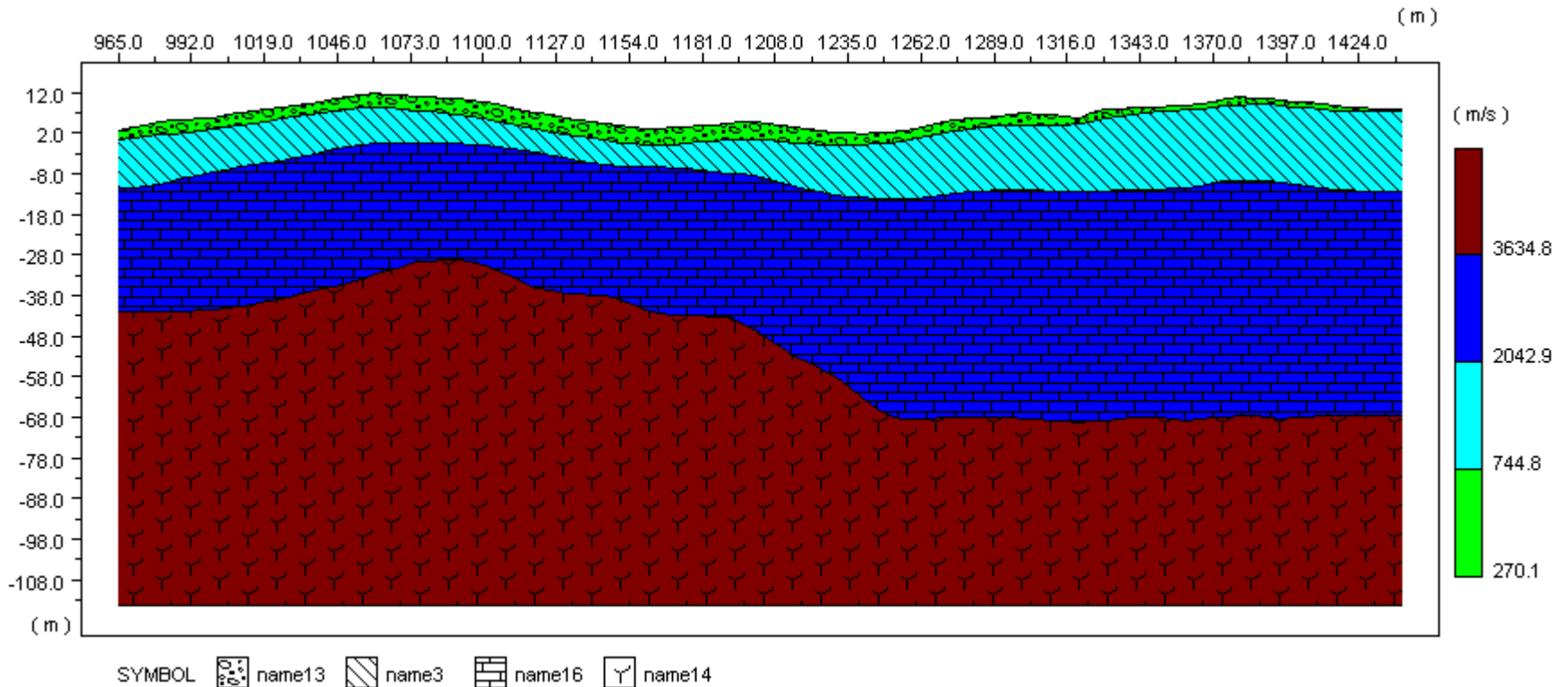
March, 2008

# Add Intercept Time Method



March, 2008

# Generate Geological Section



March, 2008