

Geogiga RImager 6.0

Release Notes



Copyright © 2016, All rights reserved.

Table of Contents

Introduction.....	1
Part 1 – General Improvements.....	2
Data Format.....	3
Color Section Display.....	3
Well Data.....	5
Curve Plotting.....	6
Minor Updates.....	7
Part 2 – RTomo.....	8
Data Input.....	9
Elevation Data.....	10
Data Editing.....	11
Bug Fixes.....	12

Introduction

This documentation introduces the release of *Geogiga RImager* 6.0.

RImager is a 2D resistivity and IP data processing and interpretation software package. It has two applications:

- *RTomo* – Resistivity and IP Tomography Software.
- *RViewer* – Resistivity and IP Data Mapping Software.

In this release, some of the major improvements include:

- Data Format – Fully support third-party data formats.
- Color Section Display – Enable reversing color section and color map; select contours to be plotted.
- Well Data – Plot well data on a color section.
- Curve Plotting - Change the foreground and background colors; define the type of tick mark for axis annotations.

There are also minor updates and bug fixes on *RImager* 6.0.

For details, please read the following sections.

Part 1 – General Improvements

The following major improvements apply to *RTomo* and *RViewer* in *Geogiga RImager* 6.0:

- Data format
- Color section display
- Well data
- Curve plotting

There are also minor updates on *Geogiga RImager* 6.0.

Data Format

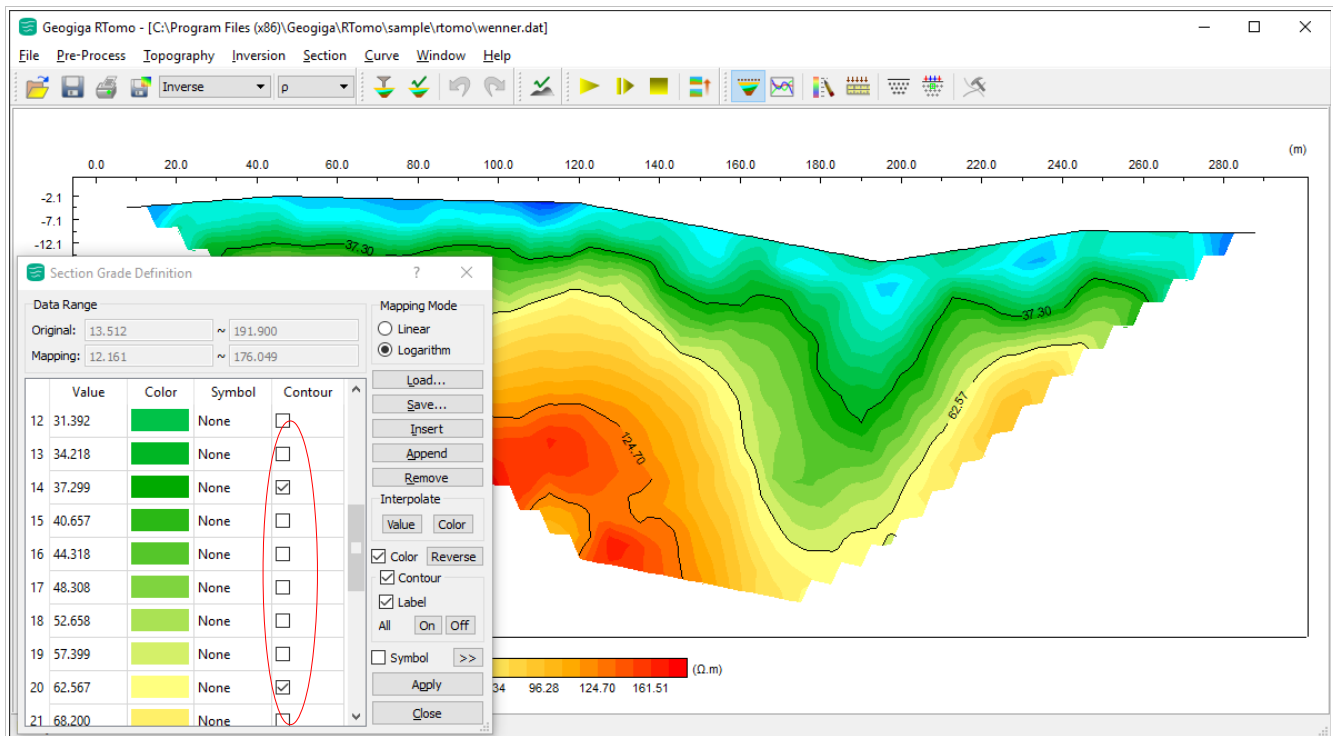
Third-party data formats are fully supported.

When a data file is opened, the data format is automatically recognized. For a third-party data format, a “~” will be appended to the original data filename, and then the data will be saved in the original filename with *RToMo* format.

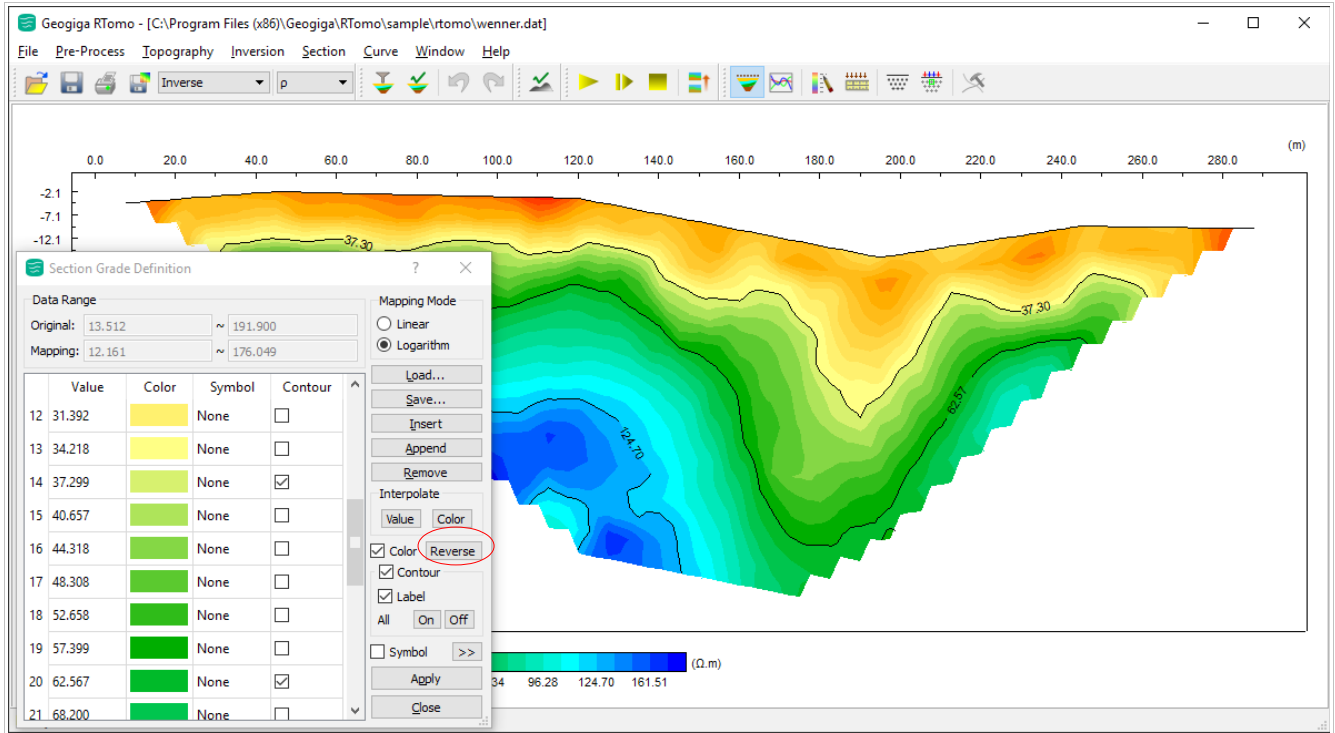
Color Section Display

For the color section display, you can:

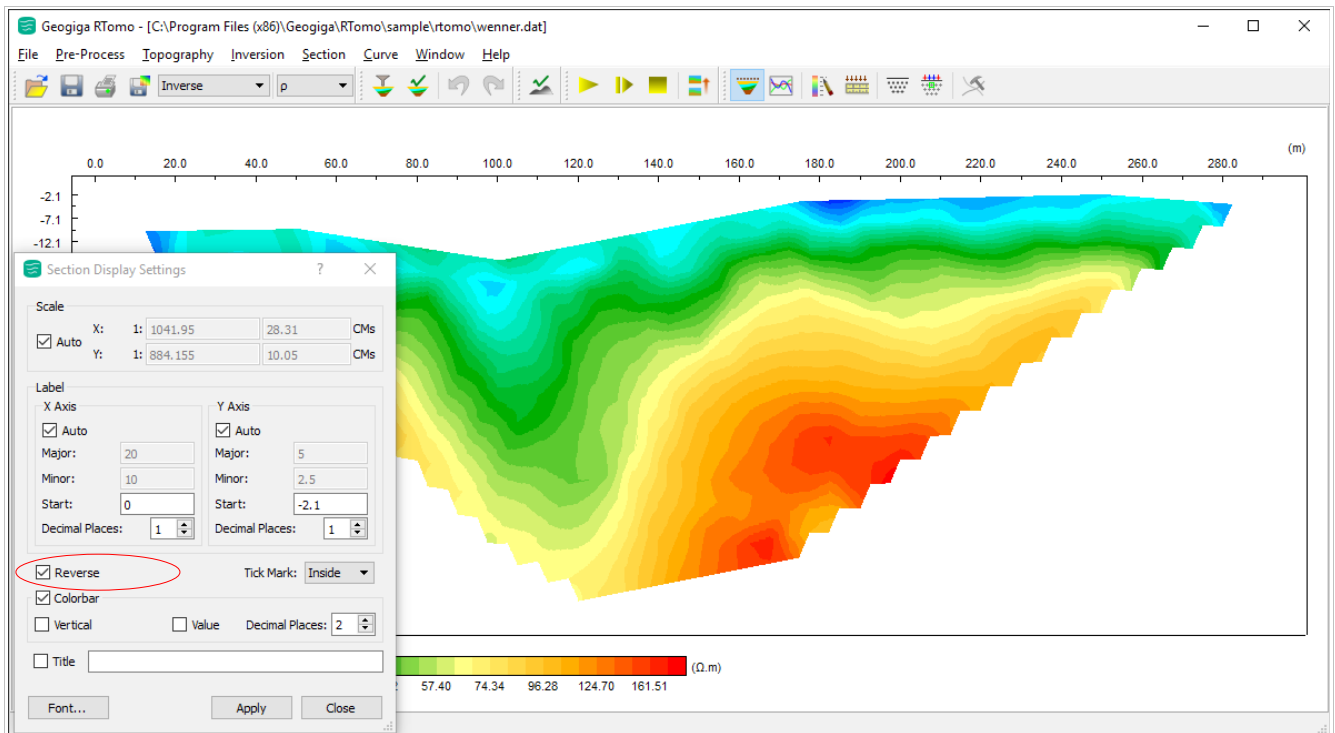
- select contours to be plotted, and have an option to reverse the colormap in the **Section Grade Definition** dialog box.
- Reverse a color section, and choose the type of tick mark for axis annotations in the **Section Display Settings** dialog box.



Selecting contours to be plotted



Reversing color map



Reversing color section

Well Data

Well data can be plotted on a color section.

Input Well Data

Well List:

Name
1 WELL1
2 WELL3

WELL3

Location: 200.00

Starting Depth: 0.00

Depth	Lithology
1 9.00	○
2 20.00	///
3 50.00	≡

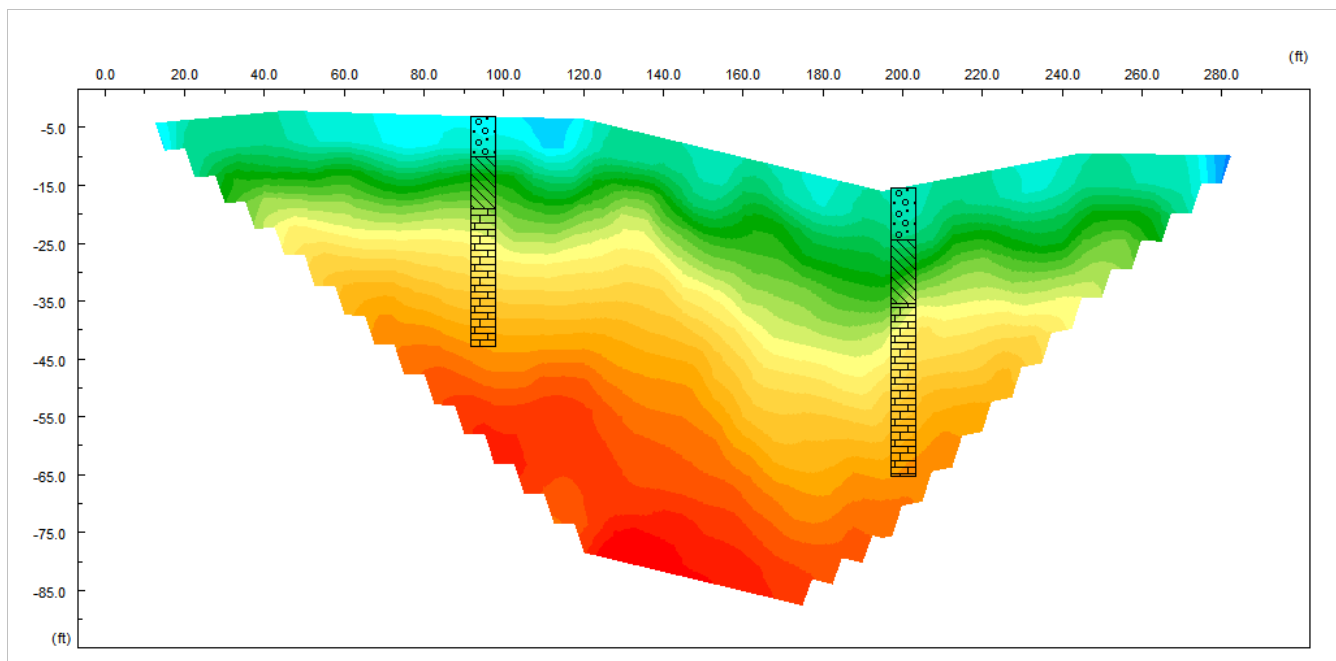
Lithologic Symbols

- name0
- name1
- name2
- name3
- name4
- name5
- name6
- name7
- name8
- name9

Show Width: 2.0

Load... Save... Apply Close

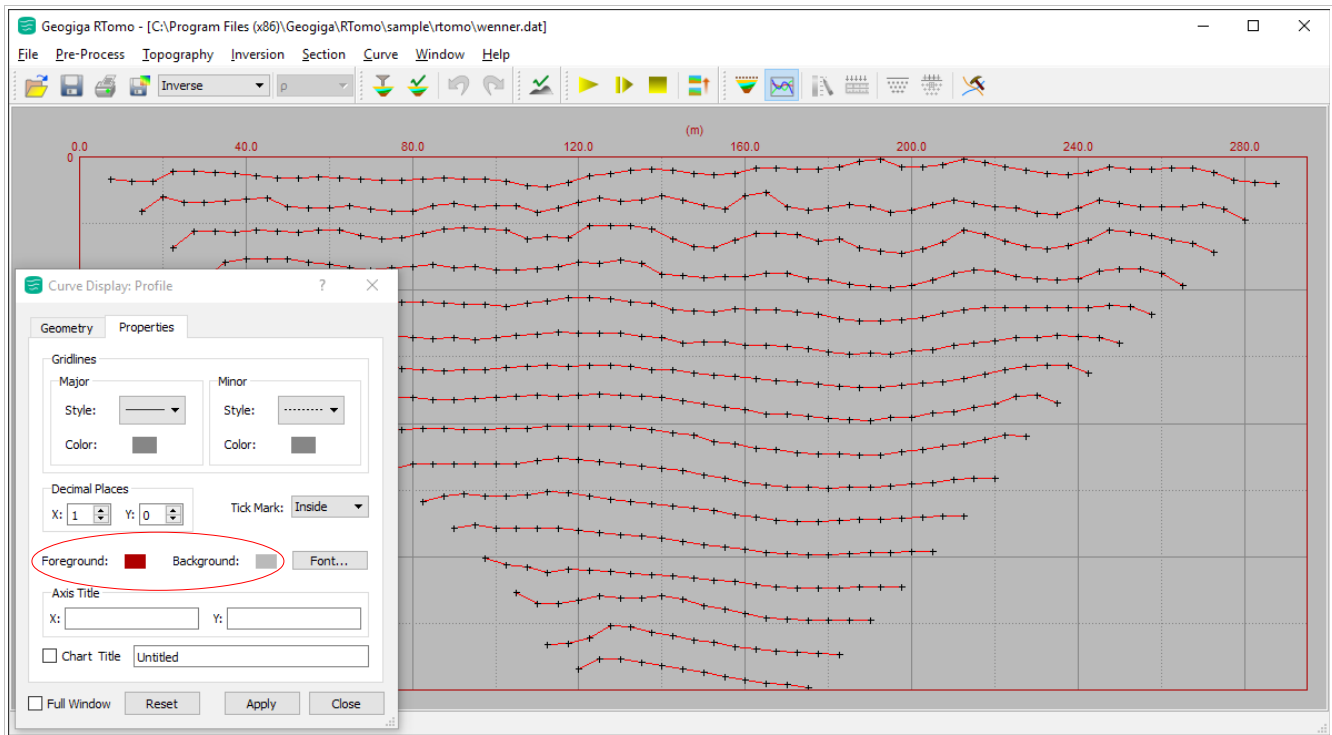
Inputting Well Data



Plotting well data on a color section

Curve Plotting

In the **Curve Display** dialog box, change the foreground and background colors, and select the type of tick mark for axis annotations.



Changing the foreground and background colors

Minor Updates

The following is the list of minor updates in *Geogiga RImager 6.0*:

- Array type – The general dipole-dipole array is added.
- Irregular survey – The data collected from an irregular survey are automatically interpolated to create a regular apparent resistivity pseudosection.
- IP data – Different types of IP data are automatically recognized and displayed.
- Image size – The size of the output image can be up to 300cm x 100cm.
- Project file – The project file is located using a relative path instead of an absolute path.
- Launchpad – An application is started from the *RImager* launchpad by **double** clicking the application icon.

Part 2 – RTomo

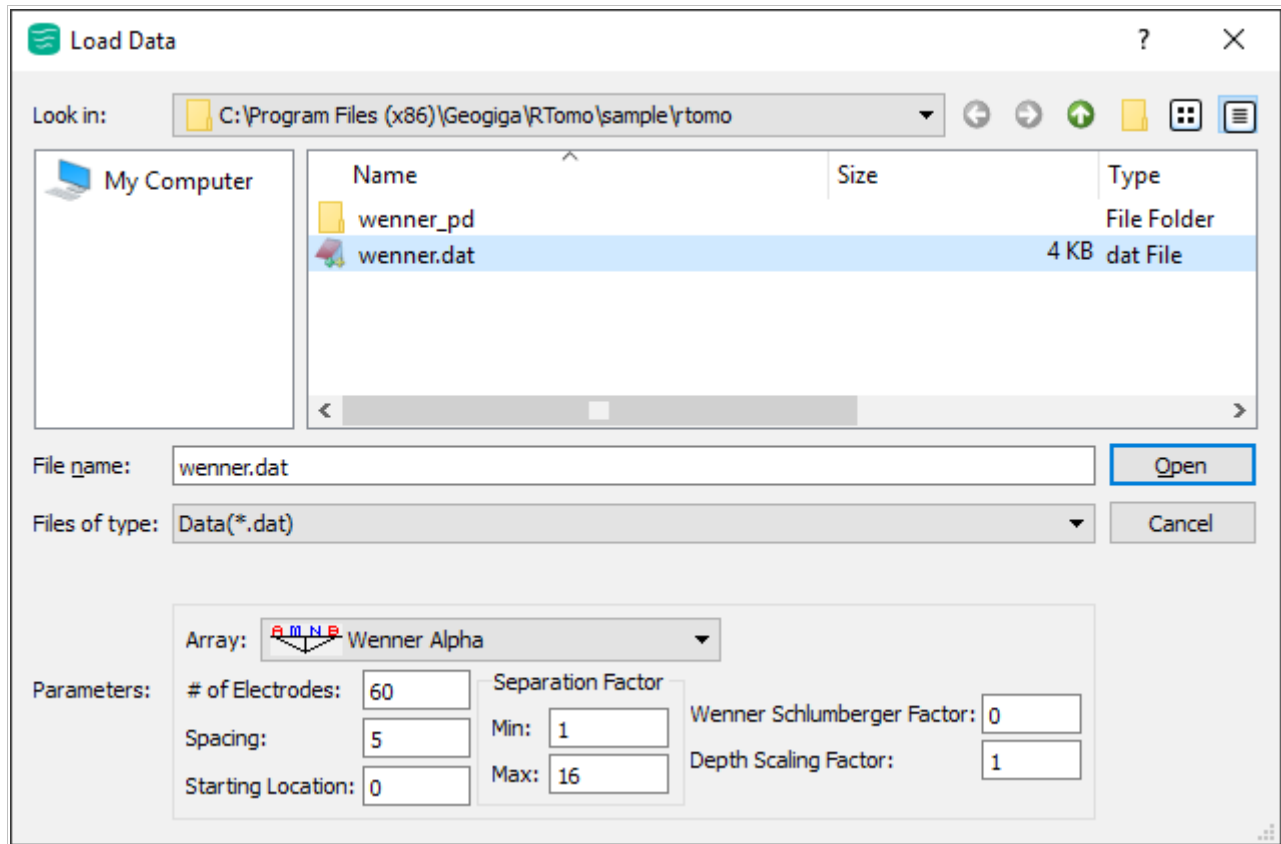
Following are the other major updates on *RTomo* 6.0:

- Data input
- Elevation data
- Data editing

There are also bug fixes in this release.

Data Input

The **Load Data** dialog box is redesigned, moving the Topography option to the **Input Elevation** dialog box.

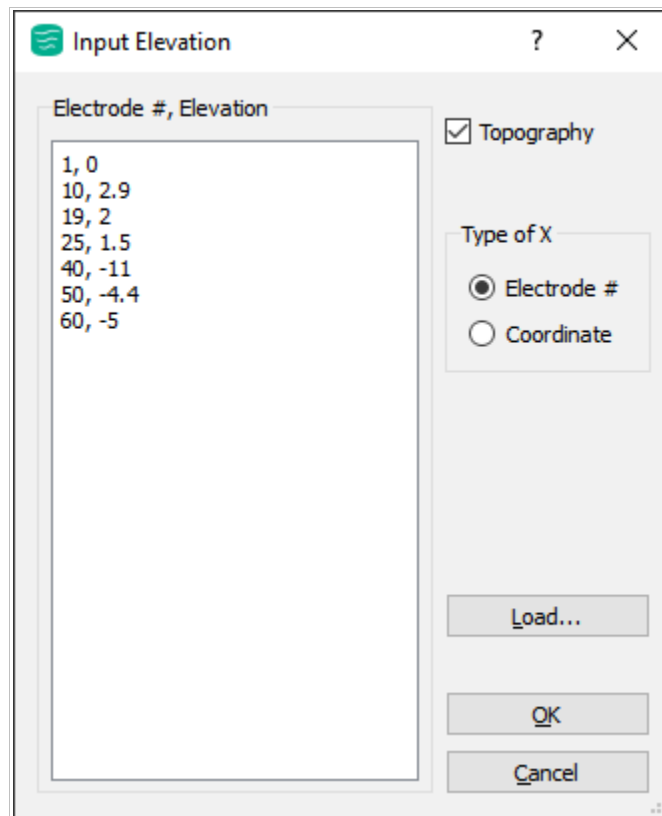


Loading data

Elevation Data

In the **Input Elevation** dialog box, you can:

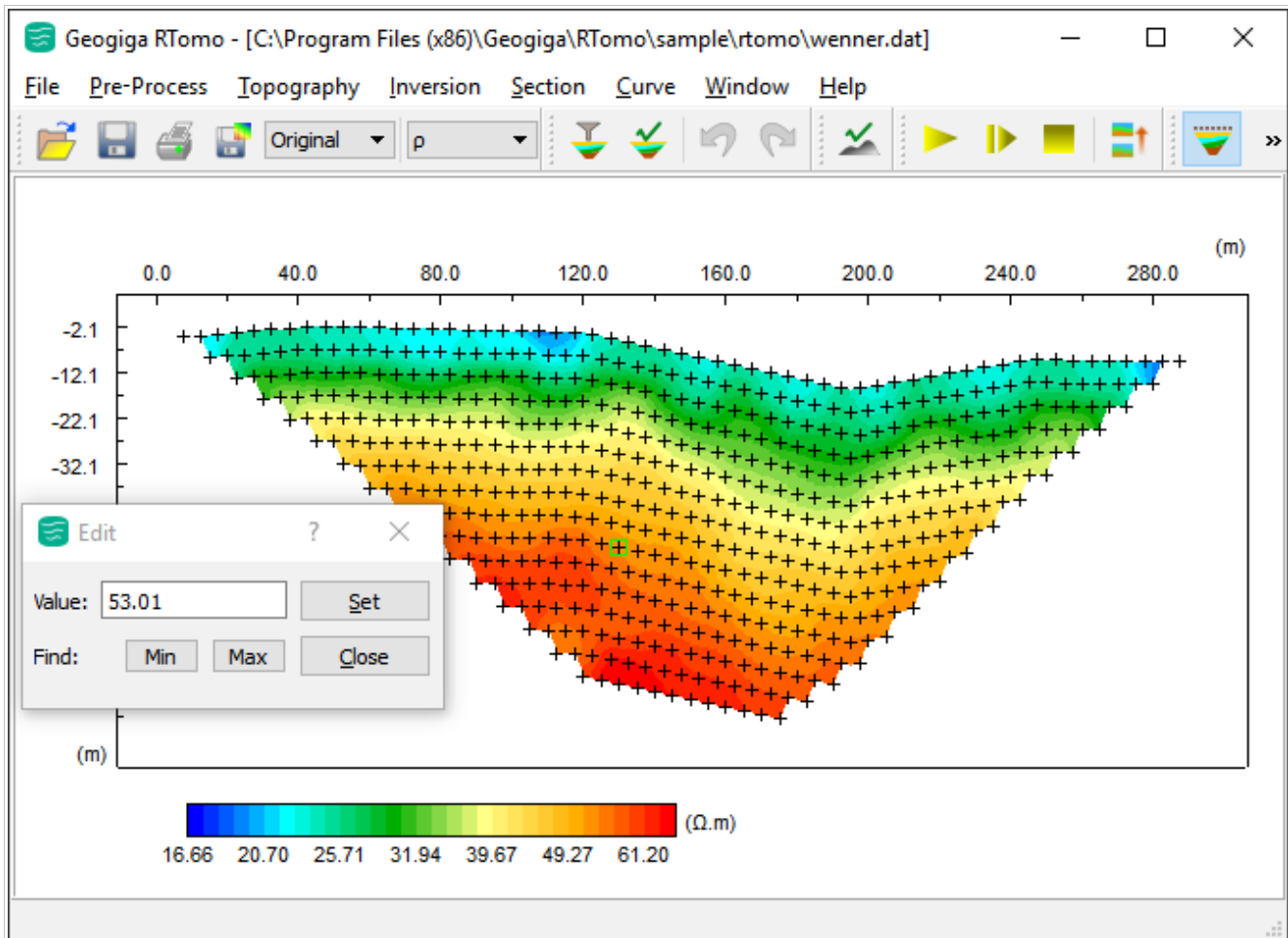
- Select the option of Topography to allow inputting elevation data.
- Choose to input elevation data based on electrode numbers or coordinates. When the Electrode # option is selected, the electrode number always starts at 1.
- Load elevation data from a text file.



Inputting elevation data

Data Editing

In the **Edit** dialog box, click the Min or Max button to find the minimum or maximum value on a 2D color section.



Editing data

Bug Fixes

Bug fixes in *RTomo 6.0* include:

- Large dataset – A dataset with a number of electrodes over 300 could not be loaded.
- Inversion – *RTomo* sometimes crashed during the inversion for a pole-dipole array.