

# Enhanced Control on Trace Display

---

Geogiga Technology Corp.

May 15, 2007

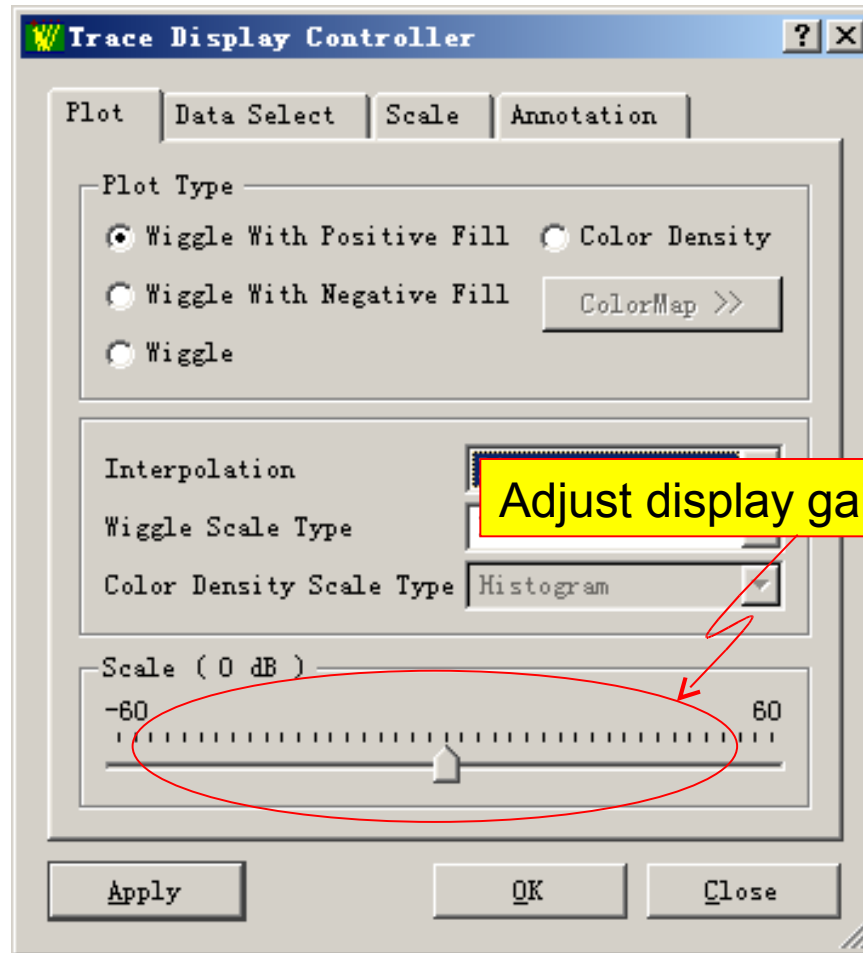


# New Features

---

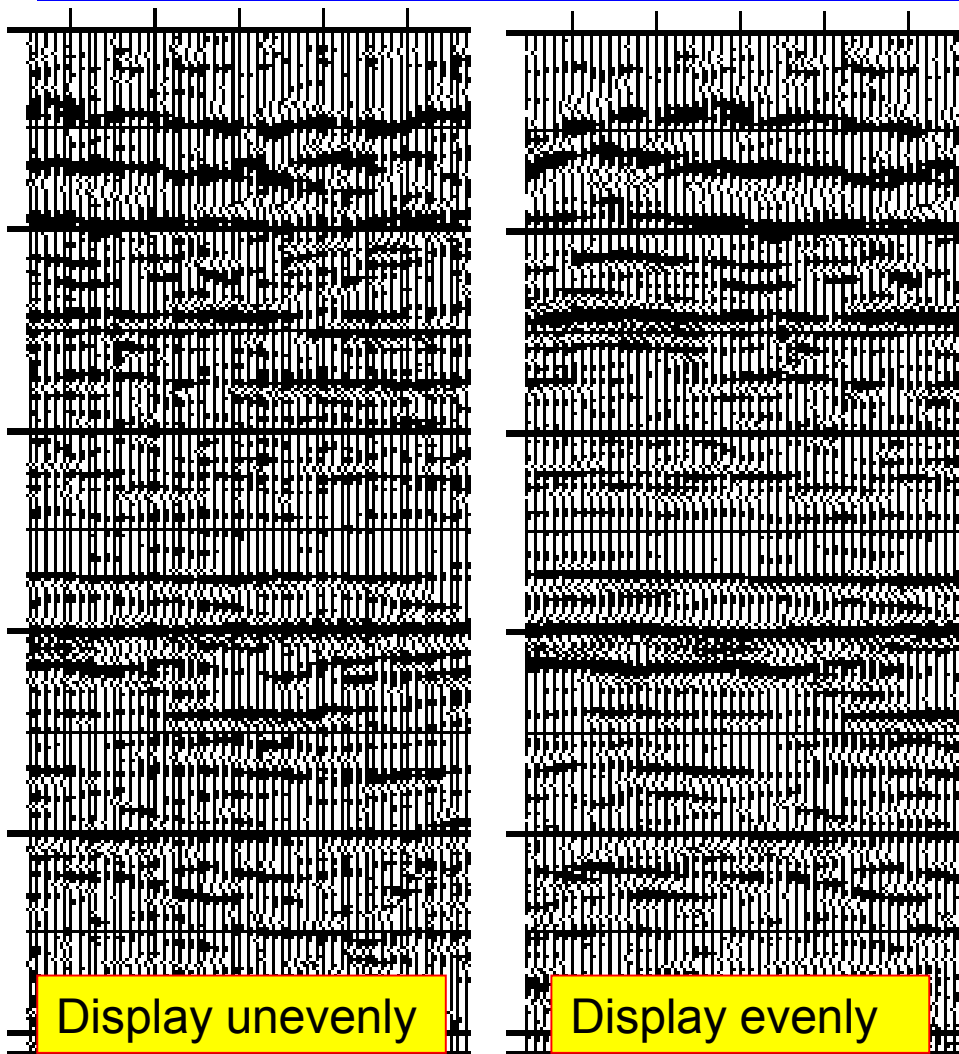
- Provide a wide range of display gain
- Force trace to be evenly displayed
- Specify the width of gap between gathers
- Clip trace amplitude
- Define the scaling factor for scaling buttons on scroll bar
- Label group optionally
- Define fonts for axes, title, and color bar
- Speed up the display of color density

# Wide Range of Display Gain

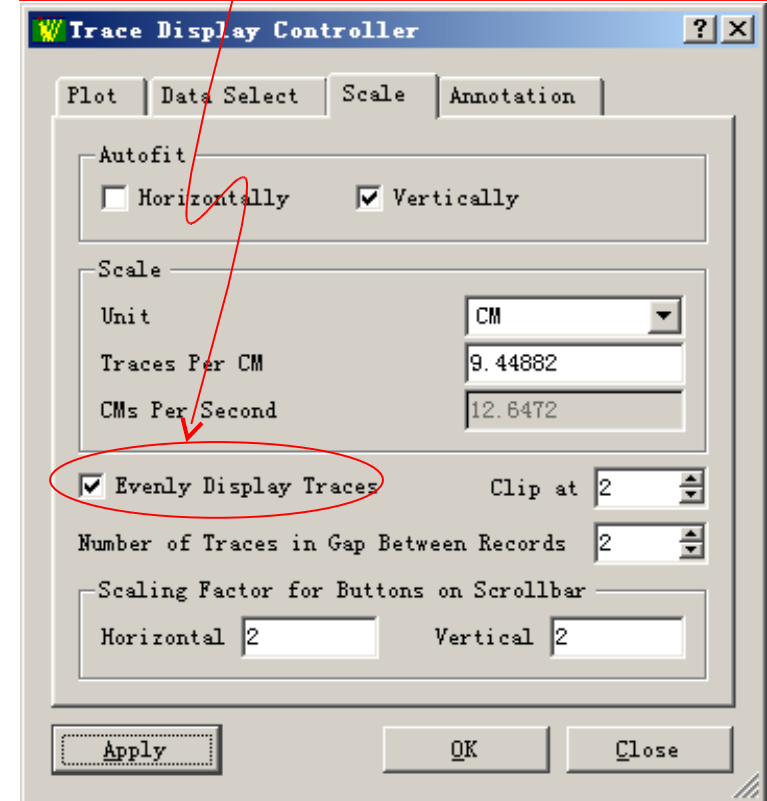


Adjust display gain with a slide bar

# Evenly Display Trace



To avoid the error of digitalization, force to evenly display traces.



# Clip Amplitude, Define Gap and Scaling

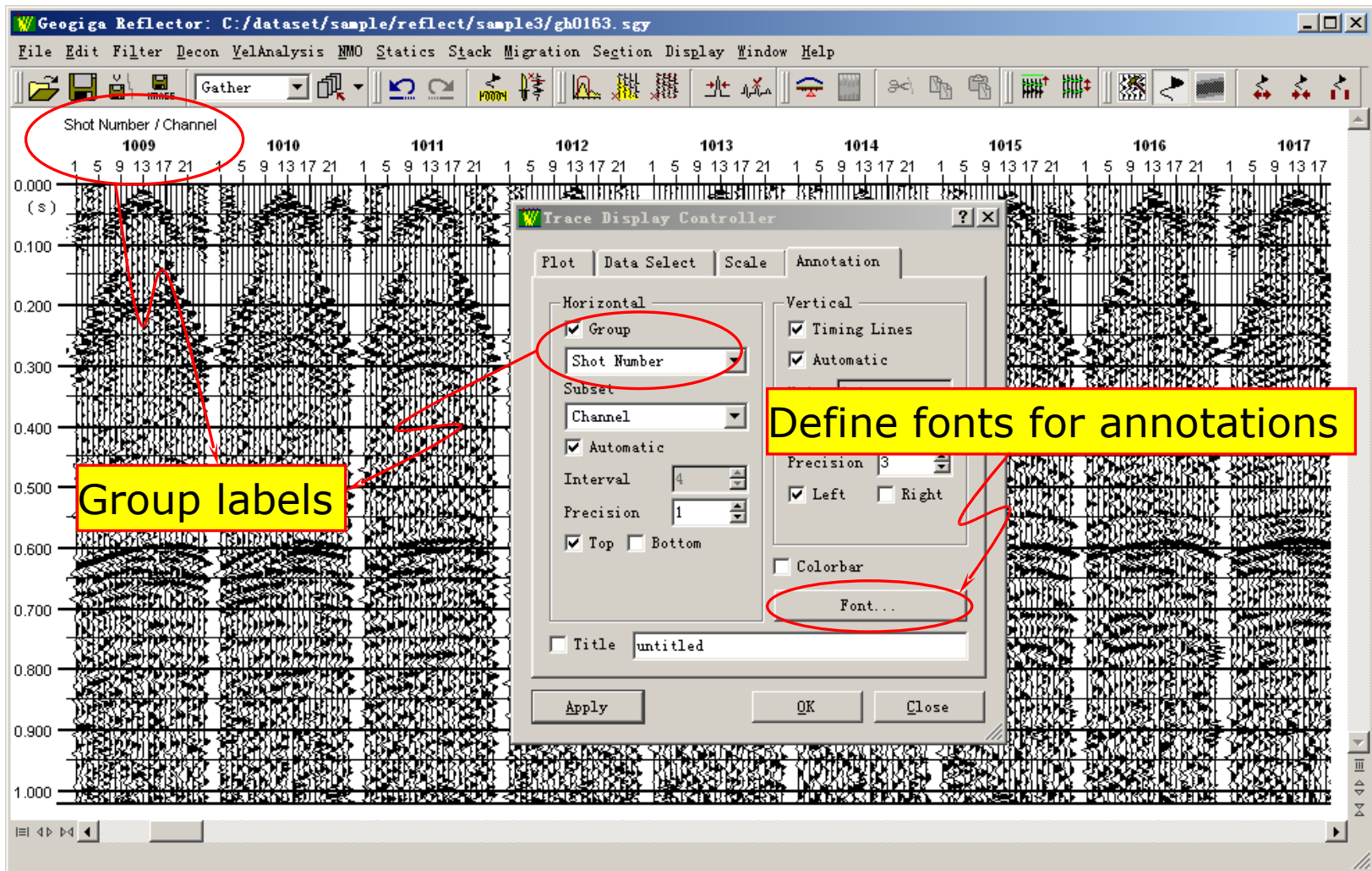
The screenshot displays the Geogiga Reflector software interface. The main window shows a seismic data plot with a time axis from 0.000 to 1.000 seconds and a trace axis from 1 to 211. A 'Trace Display Controller' dialog box is open, showing various settings. Annotations in yellow boxes with red arrows point to specific settings:

- Clip amplitude to display:** Points to the 'Clip at' spinner set to 2.
- Define the width of gap between gathers:** Points to the 'Number of Traces in Gap Between Records' spinner set to 2.
- Specify the scaling factor for scaling buttons on scroll bar:** Points to the 'Horizontal' and 'Vertical' scaling factor input fields, both set to 2.

The dialog box also includes tabs for Plot, Data Select, Scale, and Annotation. Under the Scale tab, there are options for Autofit (Horizontally and Vertically), Scale (CM), Traces Per CM (9.44882), CMs Per Second (12.2593), and a checked 'Evenly Display Traces' option.

May 15, 2007

# Group Labels and Annotation Fonts



May 15, 2007